

WT 1000



Oxley S.r.l.

Via Valle Grana, 90
12010 S. Rocco Bernero (CN)

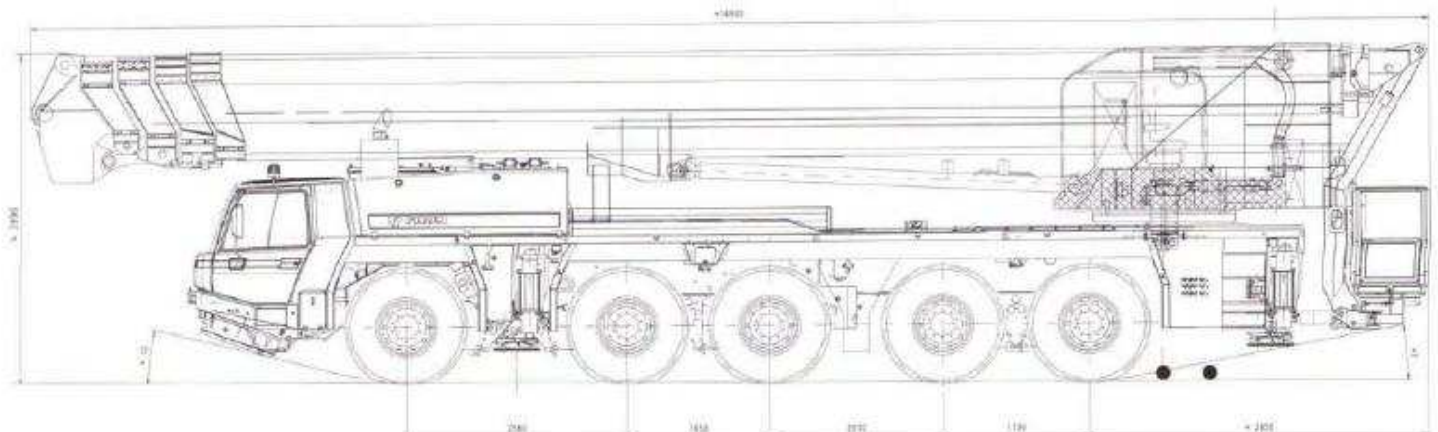
P.IVA 02841620046

Cel. 348 1505067/8

Tel. 0171 857036 Fax. 0171857547

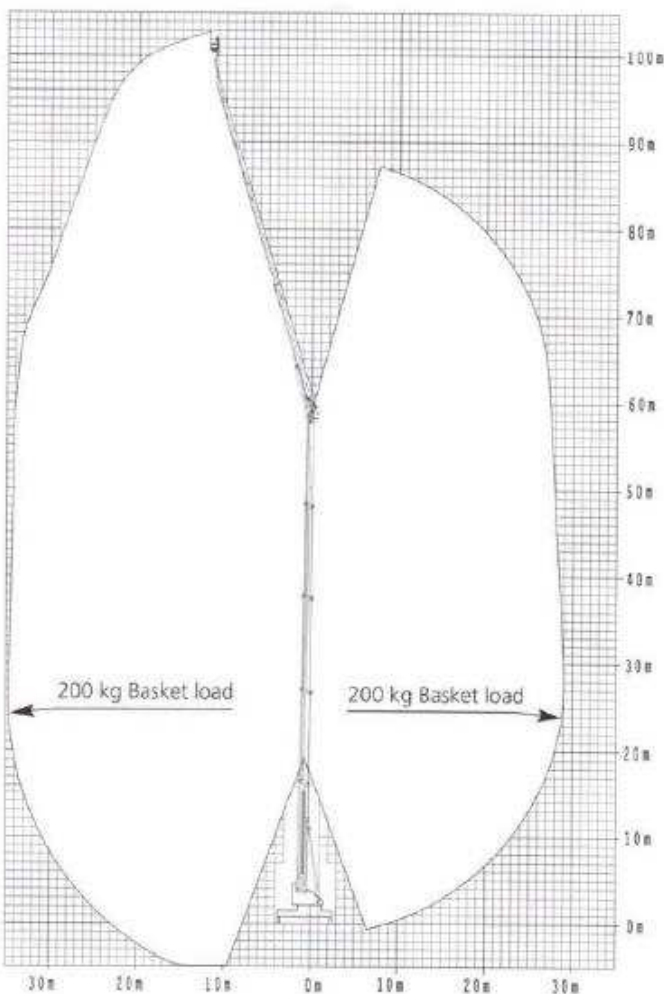
commerciale@oxley.it www.oxley.it

The largest access platform in the world is regarded as the Queen of the Skies – the WT 1000 by WUMAG PALFINGER. It was developed for assembly and maintenance work on wind turbines. Mounted on a 5-axle all-terrain mobile crane chassis, the WT 1000 can go just about anywhere. Its heavy-duty workman basket can carry nominal loads of up to 600 kg. Since it can be set up in four different stabilizing configurations, the WT 1000 can also be operated in tight spots.



A masterpiece of engineering

WT 1000 Working range



Technical Data WT 1000

Specifications of basic model

Max. working height	102.50 m
Max. basket floor height	100.50 m
Max. horizontal outreach of telescopic workman basket (with ... kg basket load)	36.0 m / 200 kg

Boom system

Telescopic Lower- and Upper boom	standard
All power guides and hydraulic and mechanical equipment internally routed and optimally protected against damage	standard
Hydraulic jib boom, working range	115°
Hydraulic Lower boom, working range	88°
Hydraulic Upper boom, working range	163°
Automatic transport locking device for jib boom	standard
Automatic return of main boom to transport position "Home Function"	standard

Workman basket

Standard basket:	3.88 / 2.15 x
Telescopic basket (WxLxH)	1.05 x 1.10 m
Optional basket:	
without telescopic function (WxLxH)	2.47 x 1.05 x 1.10 m
Slewing range of basket	2 x 84°
Full load	
with the telescopic workman basket	530 kg
Full load with the telescopic workman basket (optional)	600 kg
Motor Start/Stop in the workman basket	standard
Synthetic cover on control panel	standard
230/400 V CEE outlet in the workman basket	standard
5 anchor points to secure safety belt	standard
Displaceable control panel	standard
Graphic display	standard
Reversible slewing direction after panel relocation	standard
Collision protection for basket and jib boom	standard
Battery voltage monitoring in the basket	standard

Stabilizers

Function of stabilizers	H-type stabilizer, half-sided / full extended
Max. stabilizer spread - both sides horizontally extended	8,05 m
Stabilizer control at the base	standard
Automatic outrigger system and set-up levelling,	standard
Max. permissible inclination 0°	
Blinking lights on the stabilizer extensions	standard
4 Safety plates	standard

Slewing system

Slewing range	endless
---------------	---------

Carrier vehicle and installation

GVW class	at least 60 t
Length in transport position	ca. 16.4 m
Width in transport position	2.75 m
Height in transport position	ca. 4 m
Angle of slope	ca. 7°
Hydraulic oil tank with return line filter	standard

Manual and emergency controls

Integrated in the body - well-protected and lockable	standard
Emergency lowering system in the basket	standard
Back-up/Emergency control at the base with seat	standard
Emergency drive through a separate hydraulic cycle of chassis	standard
Dead man's device	standard
Memory function	standard